



EQUIPMENT TRAILER

42ET2X, 42ET3X, 48ET2X, 48ET3X, 53ET2X,
53ET3X, 53ET3XMR, 53ET3XMR EAST, 53ET4XMR

SHOWN WITH OPTIONAL EQUIPMENT

Haldex platinum brake system includes warranty on all components including slack adjusters, brake chambers, and valves.

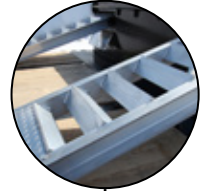
Air operated ramps that prevent injury from lifting.

Optional in floor 5 or 12 foot Air Ramp to make the gooseneck accessible.

Manual front ramps.



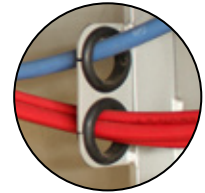
Grote Ultra Blue lighting system with standard LED lights that includes warranty on all harnesses and lights.



3030 brake chambers on all axles.



Hub Alert heat detection system on the axles.



All electrical components are secured to chassis through rubber grommets. This allows easy access for maintenance and reduces cost over life span of the trailer.

Chassis is steel shot blasted, painted with PPG industrial coating and oven-baked for 75 minutes at 145 degrees.

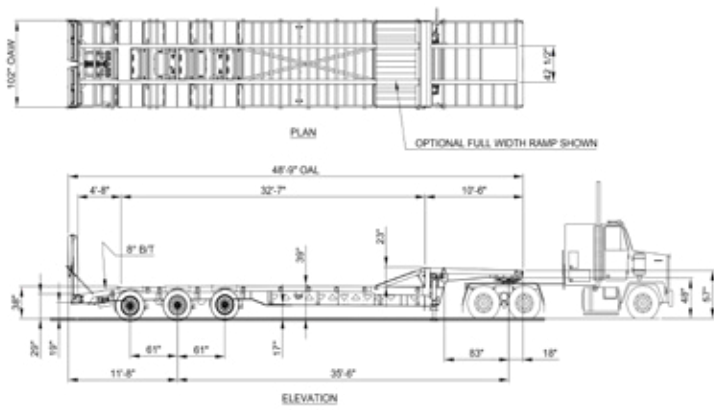


Rev. 0



D I F F E R E N T B Y D E S I G N

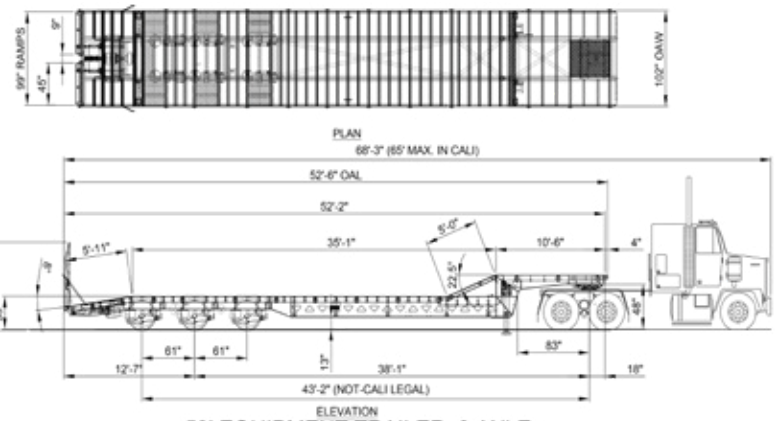
29 Hawkins Road, Centreville, NB E7K 1A4 · T 506 276-4567 · F 506 276-4380 · sales@bwstrailers.com



48' EQUIPMENT TRAILER, MODEL 48ET3X-61-102
5 FT. B/T, ACCEPTS 22.5 TIRES

NOTE: ALL DIMENSIONS ARE NOMINAL.

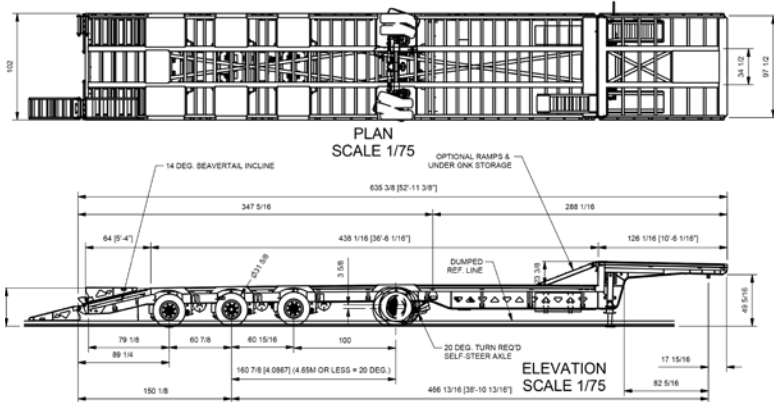
*weights shown in lbs.	GVWR	Rating in 4'	Rating in 8'	Rating in 10'	Rating in 16'	Weight
48ET3X	107,500	22,600	33,800	45,000	76,500	14,520



53' EQUIPMENT TRAILER, 3 AXLE
MODEL 53ET3X-61-102

NOTE: ALL DIMENSIONS ARE NOMINAL.

*weights shown in lbs.	GVWR	Rating in 4'	Rating in 8'	Rating in 10'	Rating in 16'	Weight
53ET3X	107,500	22,600	33,800	45,000	76,500	15,900



53ET4X MR
53 FT. EQUIPMENT TRAILER, 4 AXLE, 61" SPREAD +100", 17.5 TIRES

NOTE: ALL DIMENSIONS ARE LOADED AND NOMINAL.

*weights shown in lbs.	GVWR	Rating in 4'	Rating in 8'	Rating in 10'	Rating in 15'	Weight
53ET4X MR	110,000	25,000	35,000	55,000	80,000	16,173

WARRANTY

1 YEAR BUMPER TO BUMPER

- Warrants that the specified BWS equipment will be free from defects in materials and workmanship, under normal use and service, for the period of the first 12 months of regular service post the date-in-service. This warranty extends only to the original first owner. It is not transferable and applies only to OEM installed components and equipment.

3 YEAR PAINT AND FINISH

- Steel shot blast
 - Industrial top coat and oven baked finish is warranted against defects in materials and workmanship.
 - Custom colors are subject to a 1 year warranty only.
 - Does not cover against general wear and tear such as stone chips or fade as of 2016.
- *CONDITIONS MAY APPLY.**

5 YEAR SUPER STRUCTURE

- Warrants the trailer main frame beams or "super-structure" (consisting of the top and bottom flanges, and their connecting web) to be free from defects in materials and workmanship, under normal use and service for a period of 5 years from the date-in-service only to the original first owner.

SUSPENSION

- Ridewell holds a 5 year warranty on all beams and bushings.

6 YEAR BRAKES

- Haldex Platinum Warranty to the 1st owner Life Seal equipped Haldex ABS component brake system slack adjusters/brake chambers (Haldex LifeSeal)/ABS system ECM & control valve. 6 year or one (1) million mile warranty against defects in material or workmanship.

7 YEAR LIGHTING

- Grote Ultra Blue
- 7 year warranty on the male pin harness
- 10 year warranty on tail lights

ADDITIONAL OPTIONS

ACCESSORIES

TOOLBOX ALUM. (45IN. X 18IN. X 18IN.) + BRACKETS. (PASSENGER **OR** DRIVER'S SIDE)

IN FLOOR CHAIN BOX AT REAR OF GNK **OR** REAR OF MAIN DECK. (DECKPLATE COVER INCLUDED)

DECK

114 IN. **OR** 120 IN. WIDTH EXCLUDING LOAD SECUREMENT DEVICES. (OVER WIDTH PERMITS MAY BE REQUIRED)

LIGHTING / ELECTRICAL

AMBER FLASHING STROBE LIGHTS. (MOUNTED IN RAMPS)

LED 4 IN. WIDE LOAD LIGHTS PULLOUT STYLE **OR** LED WIDE LOAD LIGHTS 2 1/2 IN. SWING OUT STYLE

GOOSENECK

15,000 LBS ELECTRIC WINCH **OR** 20,000 LBS HYDRAULIC WINCH.

LOAD SECUREMENT

IN FLOOR FLUSH MOUNTED D-RINGS, CHAIN PULL OUTS, EXTRA MOUNT D-RINGS, J-HOOKS.

WINCHES (3 BAR WELD ON) SIDE MOUNT **OR** UNDERMOUNT, SLIDING WINCHES, WINCH TRACK.

MOULDED RUB RAIL AND STAKE POCKETS. WITH **OR** WITHOUT D-RINGS. INSIDE **OR** OUTSIDE NOMINAL WIDTH.

PAINT

RED, YELLOW, CUSTOM.

RAMPS

MANY RAMP OPTIONS AVAILABLE.

SUSPENSIONS / AXLES

AXLE SPACING OPTIONS OF 49 IN. **OR** 72 IN.

AIR RIDE SUSPENSION WITH VARIOUS LIFT OPTIONS.

VARIOUS ALUMINUM WHEEL PACKAGES AVAILABLE.

DUAL HOLLAND MARK V 2 SPEED LANDING GEAR.