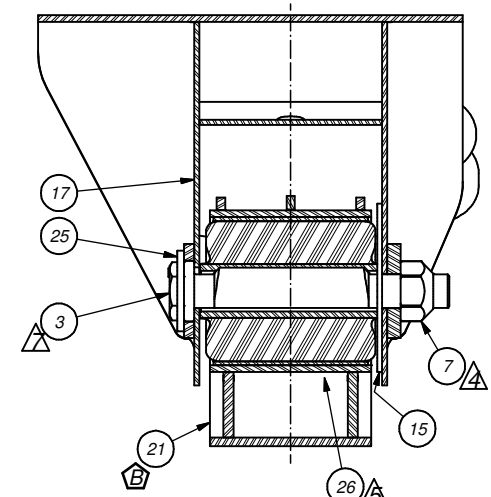
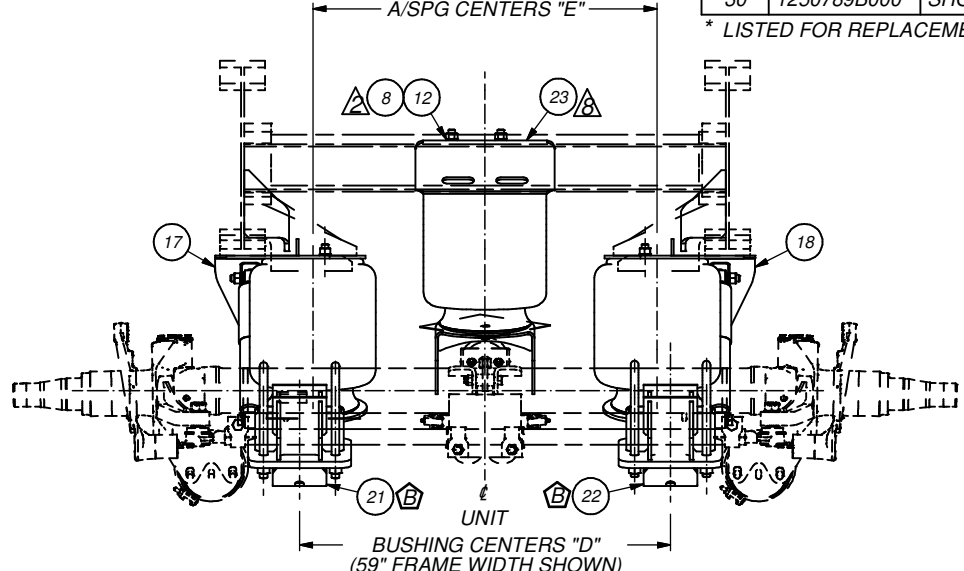
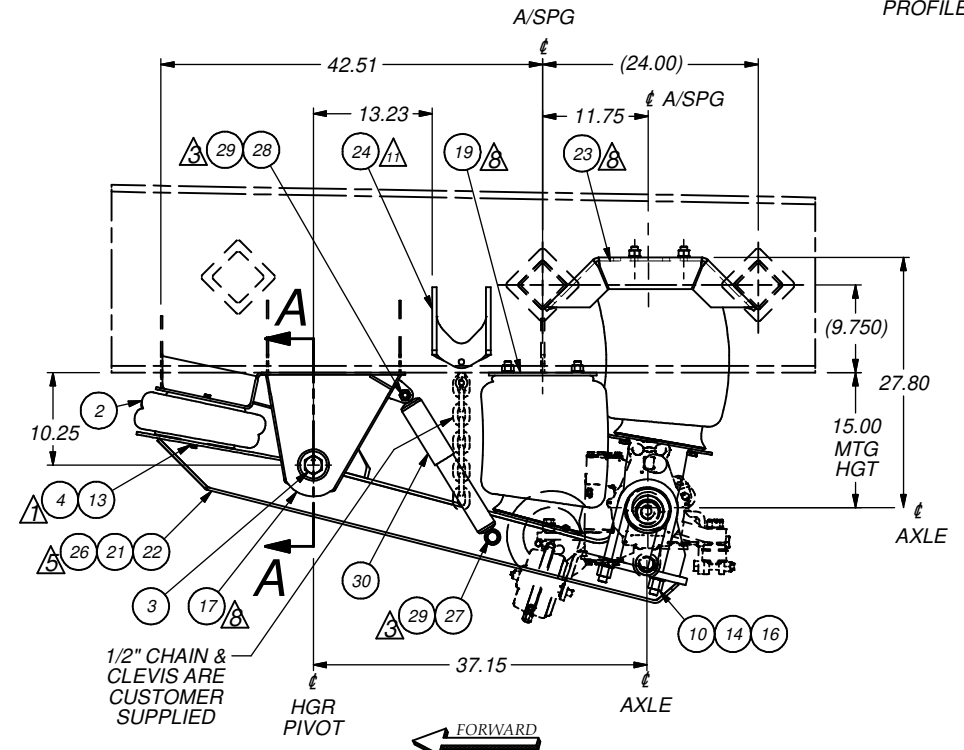
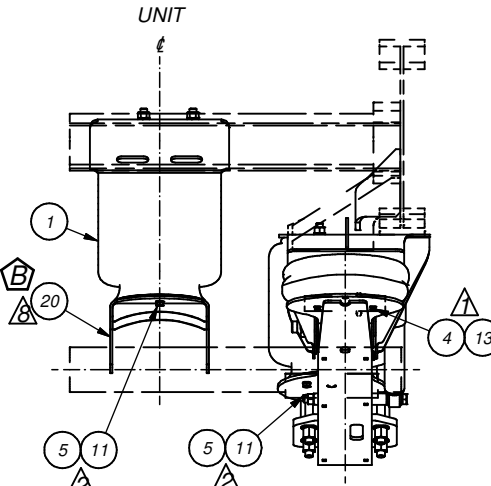
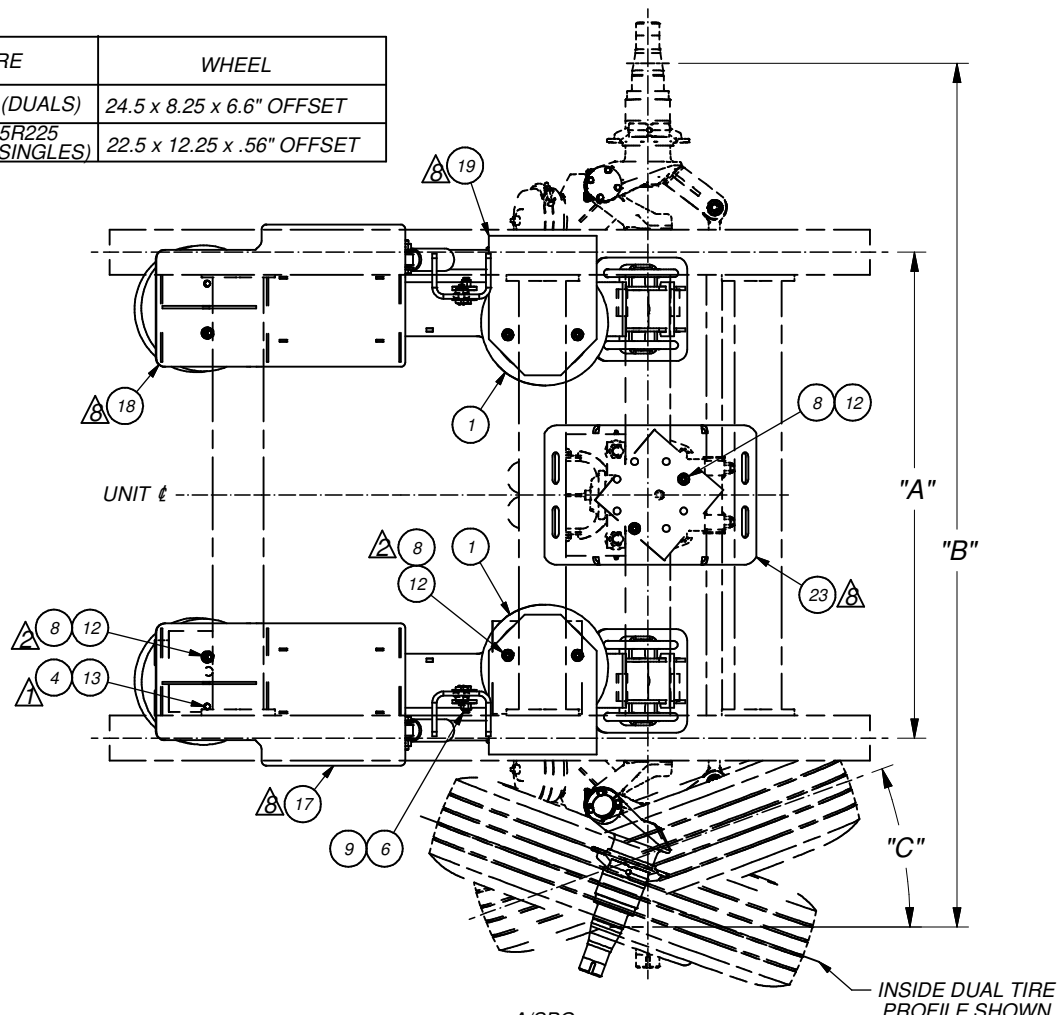


DIM "A"	DIM "B"	DIM "C"	DIM "D"	DIM "E"	TIRE	WHEEL
54.0"	95.3"	20"	41.3"	38.3"	11R24.5 (DUALS)	24.5 x 8.25 x 6.6" OFFSET
42.5"	85.0"	25"	29.9"	26.9"	385/65R225 (SUPER SINGLES)	22.5 x 12.25 x .56" OFFSET



SECTION A-A
NTS



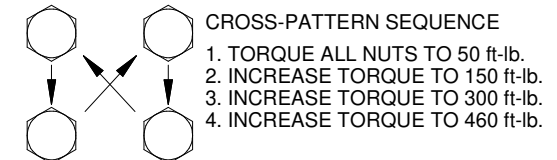
INSTALLATION AND SERVICE NOTES

- ⚠ TORQUE TO 25 ft/lbs
- ⚠ TORQUE TO 50 ft/lbs
- ⚠ TORQUE TO 200 ft/lbs
- ⚠ TORQUE TO 1,000 ft/lbs
- ⚠ BUSHING (ITEM 26) IS A PART OF THE BUSH/BEAM ASSY (ITEMS 21 AND 22).
- ⚠ WELD AXLE PER RIDEWELL WELD PROCESS #1.
- ⚠ INSTALL THE ANTI-TURN WASHER (ITEM 25) OVER THE HEAD OF THE ECCENTRIC BOLT (ITEM 3) AND WELD AS SHOWN AFTER APPLYING THE RECOMMENDED TORQUE.
- ⚠ SEE SHEET 2 FOR FIELD WELDING DETAILS.
- ⚠ AFTER SUSPENSION HAS BEEN IN OPERATION FOR 6,000 MILES, ALL FASTENERS SHOULD BE RE-TIGHTENED TO THE RECOMMENDED TORQUE. REPEAT EVERY 50,000 MILES.
- ⚠ DOWN-TRAVEL SHOULD BE LIMITED BY CHAIN EXTENSION PAST THIS TRAVEL CAN DAMAGE AIR SPRINGS.
- ⚠ VERTICAL POSITION OF ITEM 24 MUST BE ADJUSTED DURING INSTALLATION TO INSURE CORRECT REBOUND LIMIT. APPROXIMATELY 9 LINKS OF 1/2" CHAIN ARE REQUIRED.

PARTS REQUIRED FOR 6001101 (CARTON OF PARTS)						
PARTS REQUIRED FOR 3011175 (HGR/BEAM RH)						
PARTS REQUIRED FOR 3011174 (HGR/BEAM LH)						
ITEM	PART NO.	DESCRIPTION	QTY	QTY	QTY	
1	1001R14248G	A/SPG 1R14-248	3			
2	1003587447C	A/SPG 2B12-324 /22C-1.5 #7447	2			
3	1137694B000	ECC BOLT 9.5" FORGED FOR 6-3/4" BUSH 1.5 ID	1	1	-	
4	1140674B105	HHCS 3/8" 16NC 1"LG. GRADE 5, ZINC PLATE	-	-	6	
5	1145383B105	HHCS 1/2" 13NC 1-1/4"LG GRADE 5, ZINC PLATE	-	-	12	
6	1147590B108	HHCS 5/8" 11NC 2-1/2" GRADE 8, ZINC PLATE	-	-	2	
7	1150033	L'NUT 1-1/4"-7UNC -2B HVY	1	1	-	
8	1150558B102	NUT 3/4" 16NF GRD 2 ZINC PLATE, CLEAR CHROM	-	-	8	
9	1151390B102	L'NUT 5/8 11NC NYL INSERT GR 2, ZINC PLT	-	-	2	
10	1155876B108	NUT 7/8" 14NF TALL GRADE 8 (C), ZINC PLATE	-	-	8	
11	1160556B100	L'WASHER 1/2" S/T MED ZINC PLATE	-	-	12	
12	1160557B100	L'WASHER 3/4" S/T MED ZINC PLATE	-	-	8	
13	1160675B100	L'WASHER 3/8" S/T MED ZINC PLATED	-	-	6	
14	1160868B100	WASHER 7/8" A-325 FLAT ZINC PLATE	-	-	8	
15	1167680B000	WEAR WASH, UHMW-PE, BLACK	1	1	-	
16	1181466B000	U-BOLT .875-14UNF x 5.0 x 11.50 LG	-	-	4	
17	3020010	HGR ASY LH	1	-	-	
18	3020011	HGR ASY RH	-	1	-	
19	7002756	A/SPG MTG PLT	-	-	2	
20	3450294	A/SPG MTG CTR LWR	-	-	1	
21	5970506	BUSH/BEAM ASS'Y LH	1	-	-	
	4070006	LBA SUB-ASS'Y LH	-	-	-	
22	5970507	BUSH/BEAM ASS'Y RH	-	1	-	
	4070007	LBA SUB-ASS'Y RH	-	-	-	
23	8003556	A/SPG MTG CTR UP	-	-	1	
* 24	8003558	CHAIN MNT	-	-	2	
25	9003092B000	ANTI-TURN WASHER	-	-	2	
26	1117680B001	BUSHING ASS'Y 70 DURO MONOPIVOT	-	-	-	
27	1140022	HHCS 3/4" 10NC 11"LG GR8 ZN	-	-	2	
28	1147698B105	HHCS 3/4" 10NC 3-1/4LG	-	-	2	
29	1150023	L'NUT 3/4" 10NC CTRLK GR-B ZN	-	-	4	
30	1250789B000	SHOCK ASS'Y 8.01" 665526-407	-	-	2	

* LISTED FOR REPLACEMENT REFERENCE ONLY.

RUA 220 TRAILER SUSPENSION AXLE U-BOLT TORQUE PROCEDURE



RETORQUE AXLE U-BOLTS AFTER FIRST 1000 MILES OF SERVICE. OFF-HIGHWAY/SEVERE SERVICE APPLICATIONS SHOULD RETORQUE AXLE U-BOLTS AFTER EVERY 25,000 MILES OR SIX MONTHS OF SERVICE, WHICHEVER COMES FIRST.

REFER TO THE ATA TECHNOLOGY & MAINTENANCE COUNCIL (TMC) RECOMMENDED PRACTICE #643 FOR ADDITIONAL MAINTENANCE INFORMATION.

NOTE: ITEMS SHOWN IN PHANTOM ARE SUPPLIED BY CUSTOMER.

CAPACITY: 20,000 LBS.
UP TRAVEL: 11.5"
DOWN TRAVEL: 3.0"

This drawing and/or electronic media containing this drawing is the sole property of the Ridewell Corp. and is loaned with the express condition that it is not to be used in any way deleterious to the interest of the Ridewell Corp. The acceptance of this drawing and/or electronic media containing this drawing will be construed as an acceptance of the foregoing conditions. Drawings and/or electronic media containing this drawing are to be returned to the Ridewell Corp. upon request.

REV	PROJ / ECR	DESCRIPTION	DATE	BY	CHK	APPD
B	FT2425	ITEM 20 WAS 3450225, REV ITEMS 21 & 22, REV SHEET 2 VIEWS	12/1/21	AAS	GWH	BC
A	21105	REVISED U-BOLT TORQUE NOTE, ITEM 20 ROTATION WAS 14°, NOTE 3 WAS 460 ft/lbs, REV NOTE 6	6/24/21	AAS	BB	BC

DRAWN BY:	AAS	4/16/2020
CHECKED:	BB	4/17/2020
APPROVED:	BC	4/17/2020
PROJECT NO:	1867	SCALE: B-SIZE NTS, D-SIZE N/A
MATERIAL:	SEE BOM	WGT: N/A
TOLERANCES UNLESS OTHERWISE SPECIFIED: DECIMAL: X ± 0.1, XX ± 0.06, XXX ± 0.030 FRACTION: ± 1/16, ANG: ± 1', XXXX KCC *WELD TOLERANCES PER ISO WD45-02		

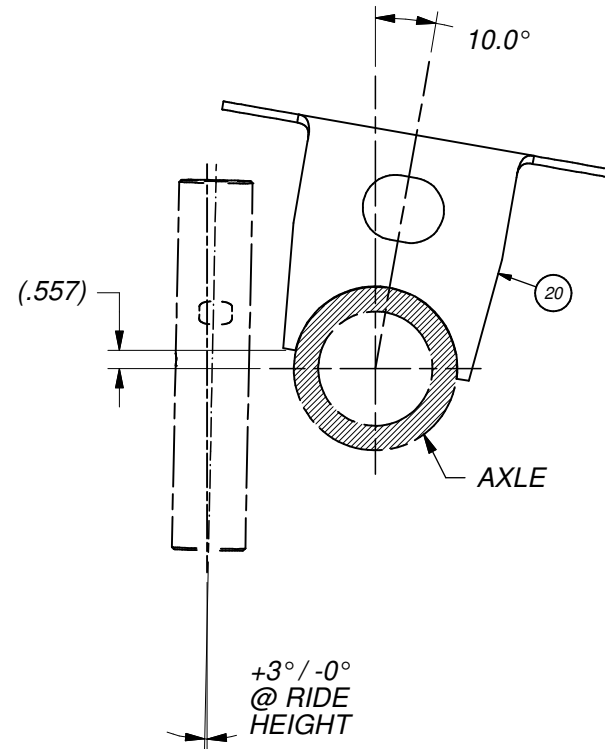
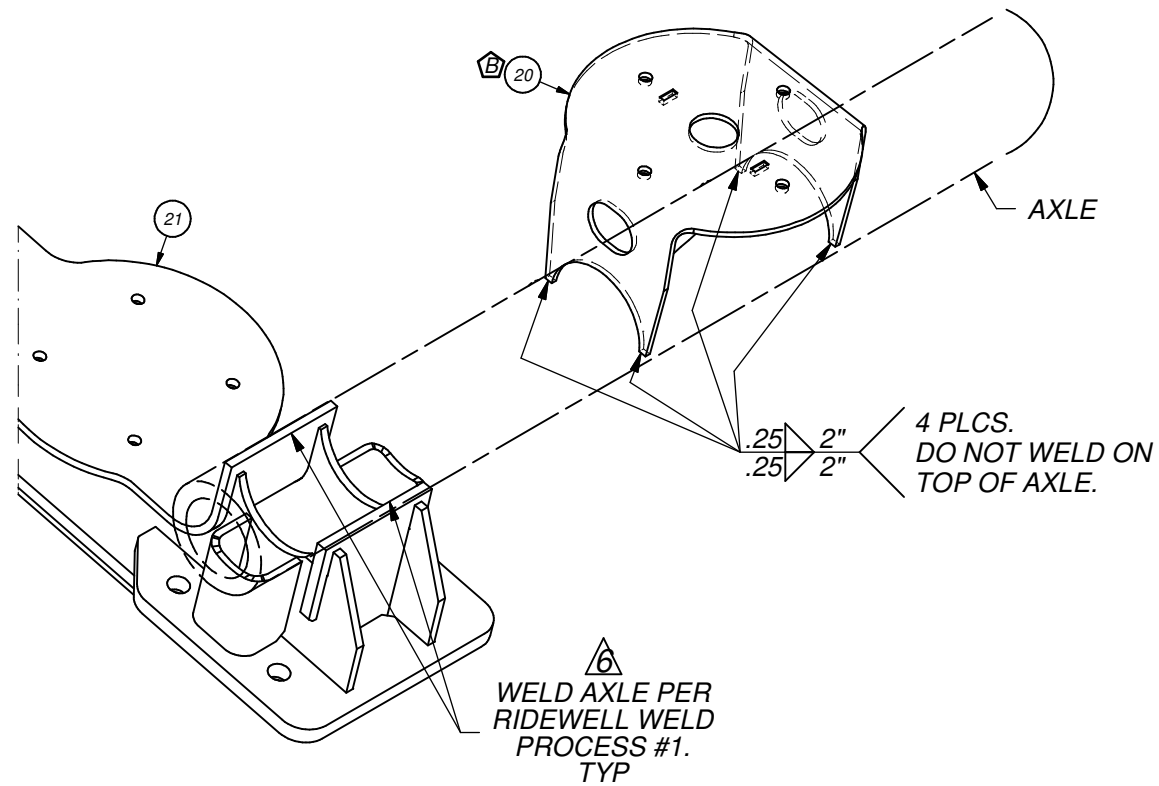
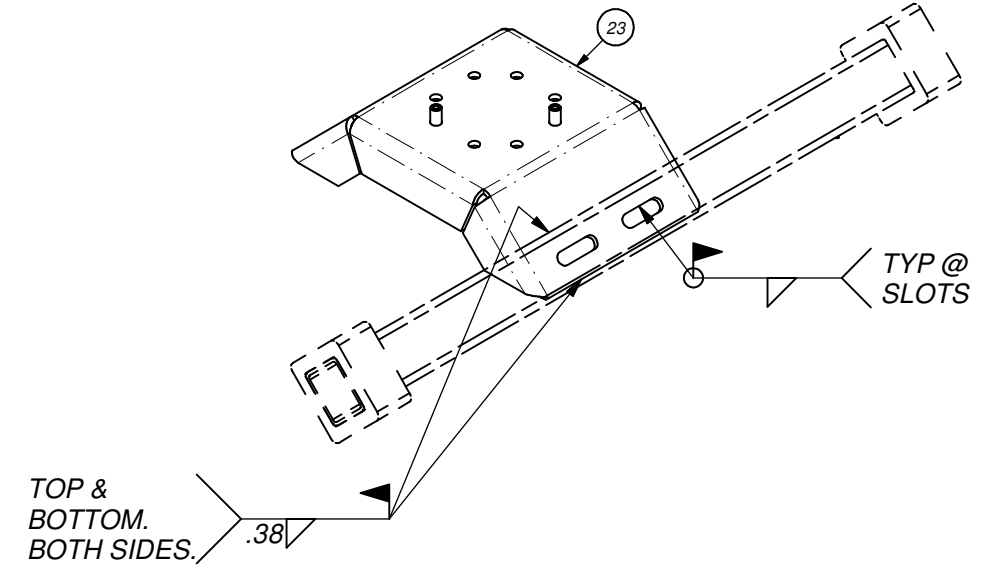
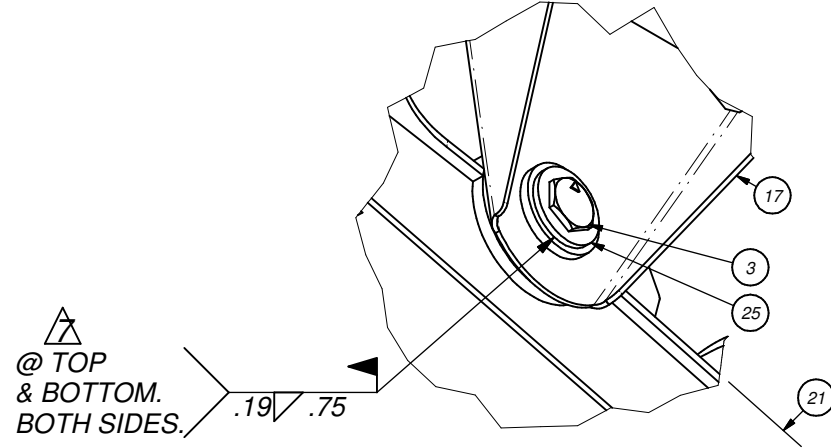
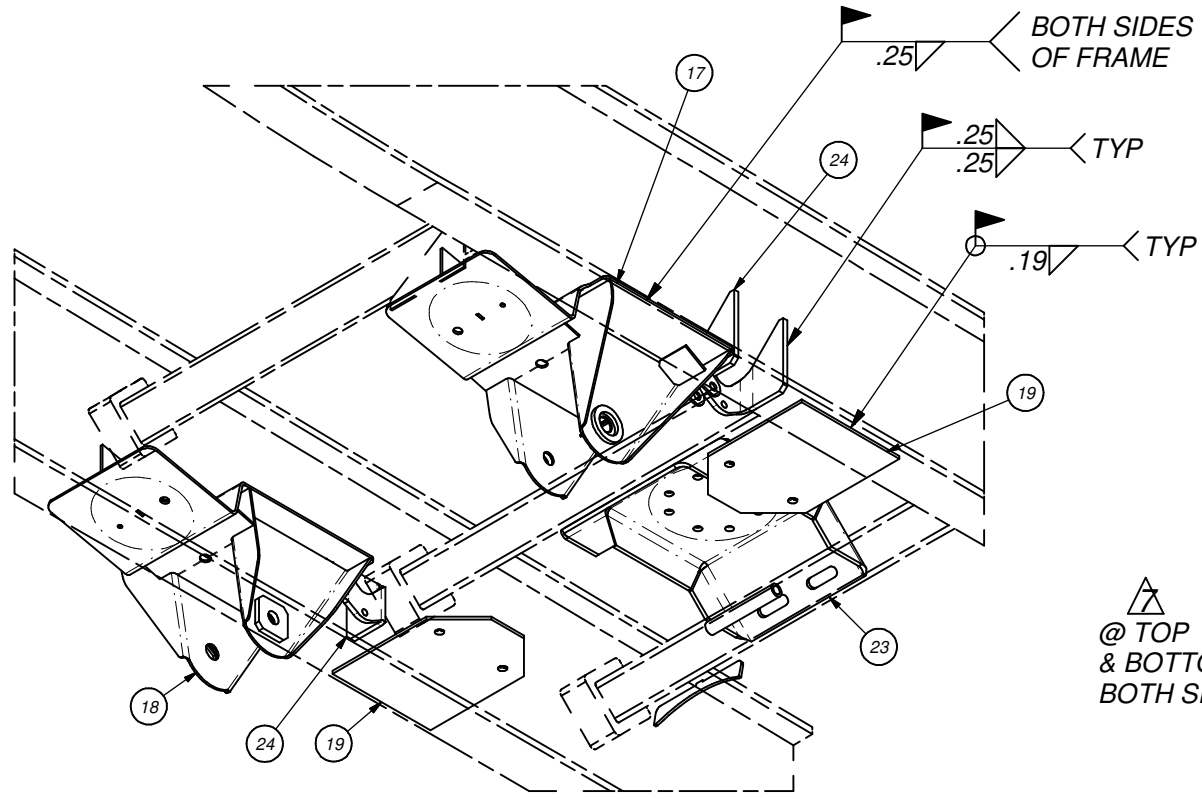
RIDEWELL CORPORATION
PO BOX 4586 SPRINGFIELD, MISSOURI 65808

TITLE: **RUA-220HL-1-15-USW (BWS) FOR IMT/LKS WITH SHOCK**

SHEET 1 OF 2

PART NO: **2200007**

REV: **B**



AIR SPRING CENTER TO CENTER CHECK DIMENSIONS			
	CENTER AIR SPRING	OUTSIDE AIR SPRING	LIFT SPRINGS
FULL JOUNCE	8.8"	8.6"	9.2"
15" RIDE HEIGHT	20.5"	16.5"	4.8"
FULL REBOUND	23.7"	18.5"	3.7"
MANUFACTURERS ALLOWED TRAVEL			
ALLOWED EXTENDED	25.8"		12.5"
ALLOWED COMPRESSED	8.9"		3.8"

(MANY PARTS NOT SHOWN FOR CLARITY)
(ITEMS SHOWN IN PHANTOM ARE CUSTOMER SUPPLIED)

DRAWN BY: AAS	4/16/2020	RIDEWELL CORPORATION PO BOX 4586 SPRINGFIELD, MISSOURI 65808
CHECKED: BB	4/17/2020	
APPROVED: BC	4/17/2020	
PROJECT NO: 1867	SCALE: B - SIZE NTS N/A D - SIZE N/A	TITLE: RUA-220HL-1-15-USW (BWS) FOR IMT/LKS WITH SHOCK
MATERIAL: SEE BOM	Weight: N/A Feet: N/A	SHEET 2 OF 2
TOLERANCES UNLESS OTHERWISE SPECIFIED: DECIMAL: .X ± 0.1 FRACTION: ± 1/16 .XX ± 0.06 ANG: X ± 1' .XXX ± 0.030 .XXX KCC *WELD TOLERANCES PER ISO W45-02		PART NO: 2200007 REV: B