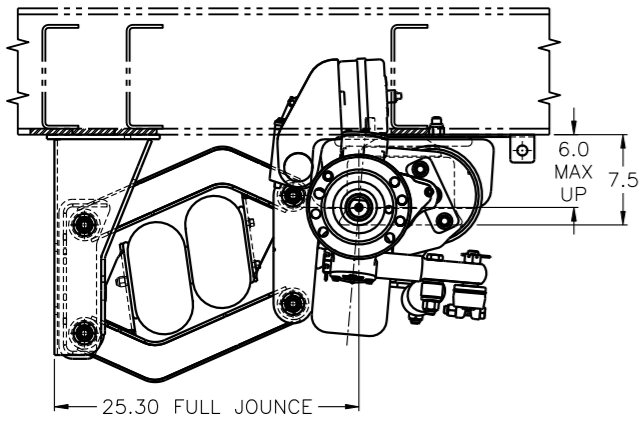
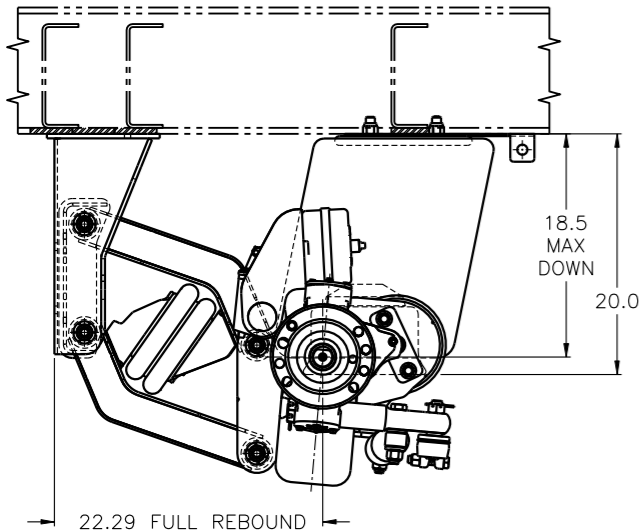
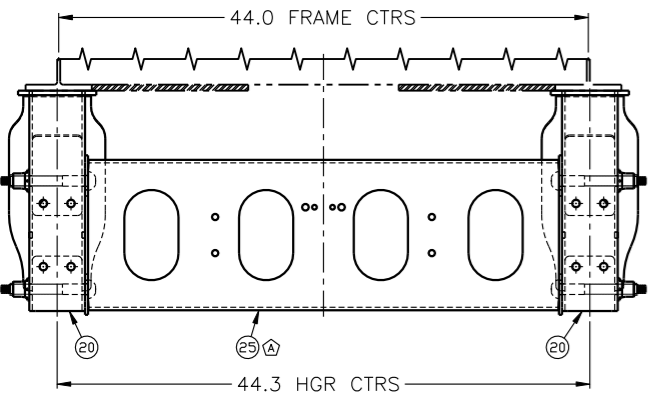


TORQUE VALUES			
ITEM	SIZE	TORQUE	
		(FT-LB)	(N·M)
6	.50-13NC	50	68
10	.50-20NF	25	34
12	.75-10NC	160	217
9/13	.75-16NC	50	68

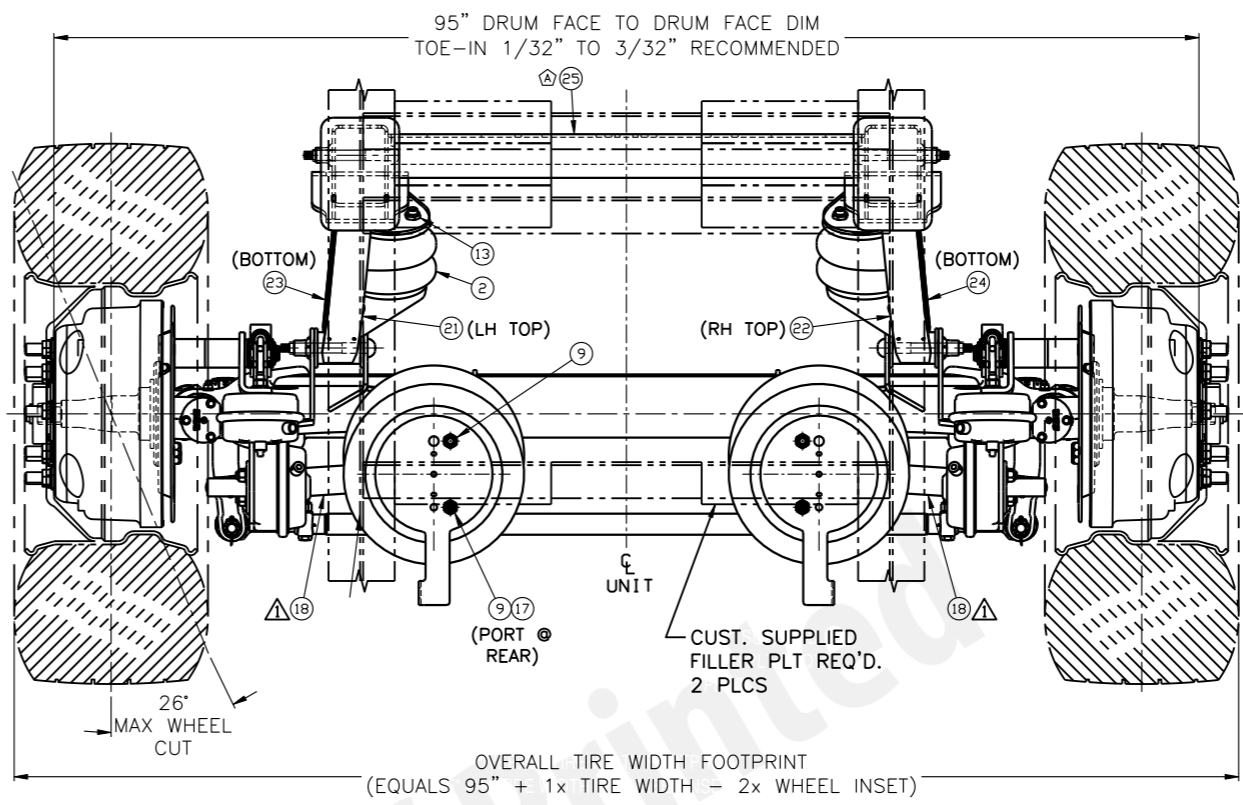
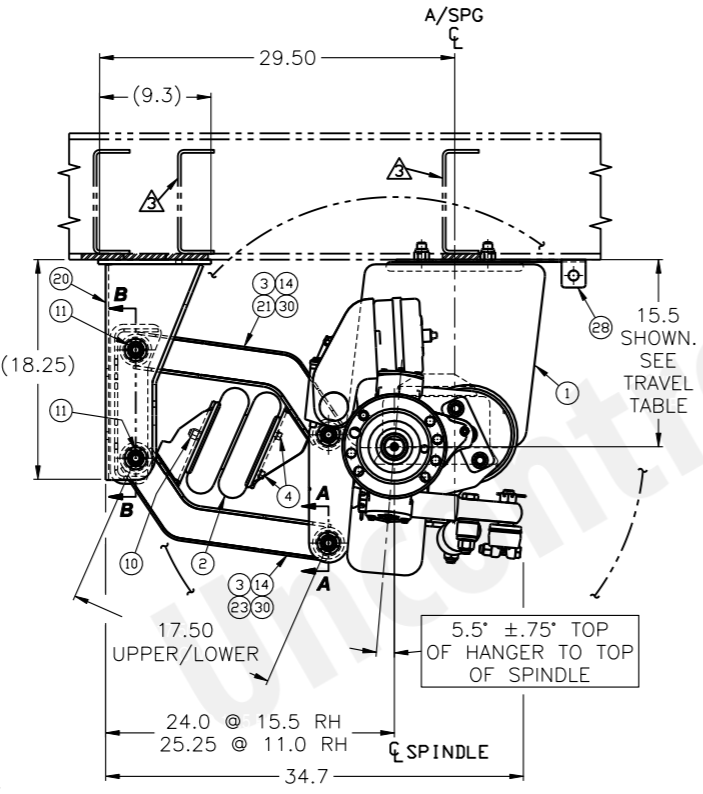
TRAVEL TABLE		
RISE HEIGHT	UP TRAVEL	DOWN TRAVEL
11.0	5.0	7.5
11.5	5.5	7.0
12.0	6.0	6.5
12.5	6.5	6.0
13.0	7.0	5.5
13.5	7.5	5.0
14.0	8.0	4.5
14.5	8.5	4.0
15.0	9.0	3.5
15.5	9.5	3.0



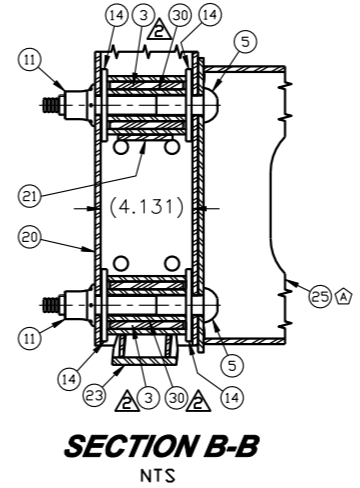
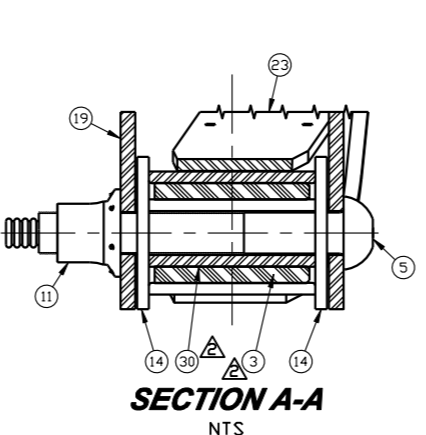
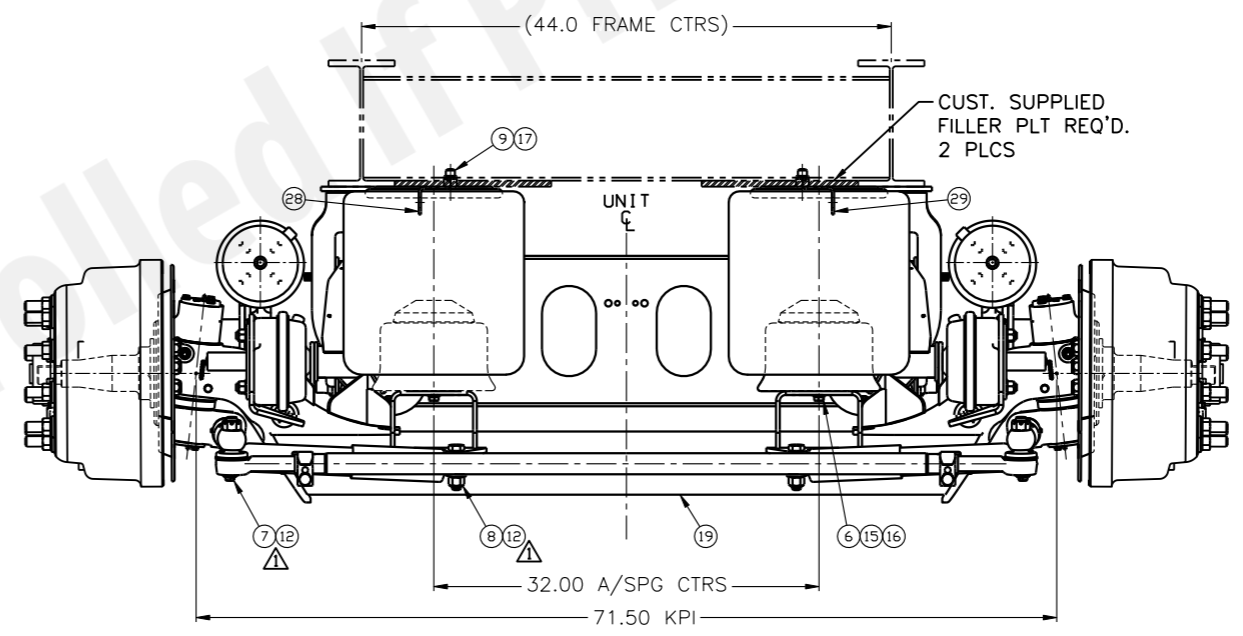
ARTICULATION UP



ARTICULATION DOWN



OVERALL TIRE WIDTH FOOTPRINT (EQUALS 95" + 1x TIRE WIDTH - 2x WHEEL INSET)



PARTS REQUIRED FOR 2339109(S) (STEER LOCK VERSION)				PARTS REQUIRED FOR 2339109 (NON STEER LOCK VERSION)	
ITEM No.	PART No.	PART DESCRIPTION	No. REQ'D.	No. REQ'D.	
1	1001R14296G	A/SPG 1R14-296	2	2	
2	1003586946C	A/SPG 2B9-254 / 20F-2 #6946	2	2	
3	1120043	BUSH 2.14x1.428x3.30LG 90A	8	8	
4	1130051	WHIZ-LOCK FL SCR .375-16 x .75	4	4	
5	1130060	HUCK BOLT 7/8" 4.75-5.12 GLGR8	8	8	
6	1140554B105	HHCS .50-13NC x 1" LG GR5 ZINC	4	4	
7	1143076B105	HHCS .75"-10NC x 4.50" LG GR5	-	-	
8	1147698B105	HHCS .75"-10NC x 3.25" LG	-	-	
9	1150011	L' NUT .75"-16NF GR2 NYL INS	4	4	
10	1150062	L' NUT .50-20NF NYL INS GR2	2	2	
11	1150065	HUCK COLLAR 7/8" BOBTAIL	8	8	
12	1150709B105	L' NUT .75"-10NC OVAL .75" HI	-	-	
13	1154700B102	L' NUT .75"-16NF JAM NYL INS GR2	2	2	
14	1160026	SHIM WASHER .25 x 3.25 x 1.50	16	16	
15	1167053B100	WASHER .50" A-325 FLAT	4	4	
16	1167482B000	L' WASHER 50" INT TOOTHLOCK	4	4	
17	1230059	PLUG, .25" MPT HEX SOCKET	2	2	
18	1310002	DAMPER SELF CTRG	-	-	
19	1640481	AX 233T 20K FAB WT w/ABS SENSOR	1	-	
	1640481(S)	AX 233T 20K FAB WT w/STR LK w/ABS	-	1	
20	3170136	HANGER ASS'Y 233-20K LMT	2	2	
21	5050022	T' ROD SUB-ASS'Y LH UPPER 233-20	1	1	
22	5050023	T' ROD SUB-ASS'Y RH UPPER 233-20	1	1	
23	5050024	T' ROD SUB-ASS'Y LH LOWER 233-20	1	1	
24	5050025	T' ROD SUB-ASS'Y RH LOWER 233-20	1	1	
25	5480043	CROSS CHANNEL ASY 233T-20K WT	1	1	
26	6040160	BUSHING KIT 233-20K TRLR	-	-	
27	6040161	BUSHING KIT 233-20K TRLR w/HDWR	-	-	
28	8003616	A/SPG MTG PLT - LH 233-20K LMT	1	1	
29	8003617	A/SPG MTG PLT - RH 233-20K LMT	1	1	
30	9090082	SLV 1.44" O.D. x .938" I.D. x 4.111" LG	8	8	

- NOTES:**
- △ - ITEMS 7, 8, 12 & 18 ARE PART OF THE AXLE ASSEMBLY (ITEM 19) AND ARE LISTED FOR REPLACEMENT REFERENCE ONLY.
 - △ - BUSHING INSTALLATION:
 - INSERT BUSHING (ITEM 3) INTO TORQUE ROD (ITEMS 21-24).
 - APPLY ALL-PURPOSE GREASE TO BUSHING FACE AND INNER DIAMETER AND TO THE OUTER DIAMETER OF THE INNER SLEEVES (ITEM 30).
 - PRESS IN INNER SLEEVE.
 - AXLE END SLEEVES WILL NEED TO BE POSITIONED ACCORDING TO FRAME WIDTH.
 - △ - FRAME CROSSMEMBER REQ'D WITHIN 6" OF LEADING OR TRAILING EDGE OF HANGER (OPTIMAL LOCATION SHOWN). CROSSMEMBER REQ'D OVER UPPER S/SPG ALSO.
 - △ - BUSHING KITS (ITEMS 26 & 27) ARE AVAILABLE AS SEPARATE ORDER ITEMS.
 - △ - RE-TORQUE FASTENERS AFTER 6,000 MILES AND 36,000 MILES THEREAFTER.
 - △ - PRODUCT IS DESIGNED FOR SINGLE WHEEL APPLICATION.
 - △ - NOTE ALL TIRE AND WHEEL COMBINATIONS MUST BE INSET.
 - △ - TIRE AND WHEEL COMBINATION MAY DICTATE GAWR. GAWR NOT TO EXCEED 20K.

CAPACITY=20,000 lbs. (2339109(S) SHOWN)

A	1956	ITEM 25 WAS 5480042	8/5/20	AAS	GWH	MJK
REV	PROJ/ECR	REVISION DESCRIPTION	DATE	BY	CHK	APPD
DRAWN BY:	AAS	7/17/20				
CHECKED:	BB	7/21/20				
APPROVED:	MJK	7/22/20				
PROJECT NO:	1956	SCALE: B-SIZE: NTS D-SIZE: N/A	TITLE: RSS-233LMT (LOW MOUNT TRAILER) SS, LFT 20,000 lb. CAP., 5" DROP W'P-FL AXLE FULL ABS WIDE TRACK			
MATERIAL:	SEE BOM	WEIGHT:				
TOLERANCES UNLESS OTHERWISE SPECIFIED:	DECIMAL: .X ±0.1 FRACTION: ±1/16 .XX ±0.06 ANG: X ±1' .XXX ±0.030					
			SHEET 1 OF 1	PART NO:	2339109(S) LMT	
					REV:	A

This drawing and/or electronic media containing this drawing is the sole property of the Ridewell Corp. and is loaned with the express condition that it is not to be used in any way deleterious to the interest of the Ridewell Corp. The acceptance of this drawing and/or electronic media containing this drawing will be construed as an acceptance of the foregoing conditions. Drawings and/or electronic media containing this drawing are to be returned to the Ridewell Corp. upon request.