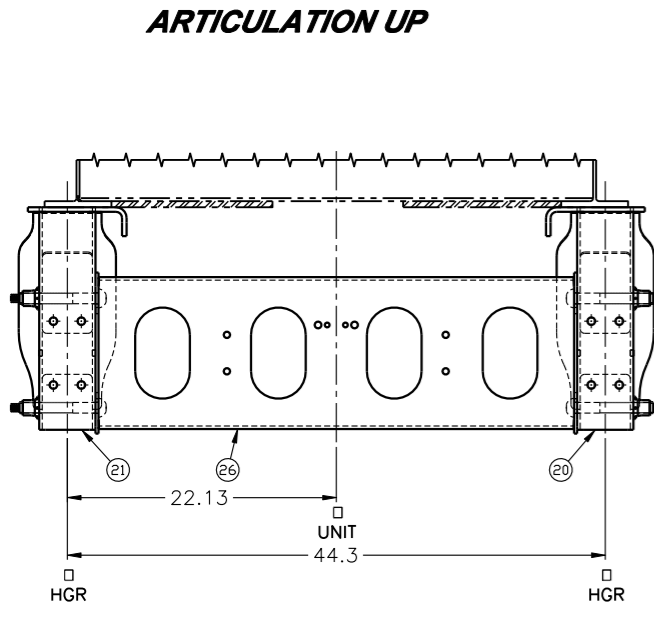
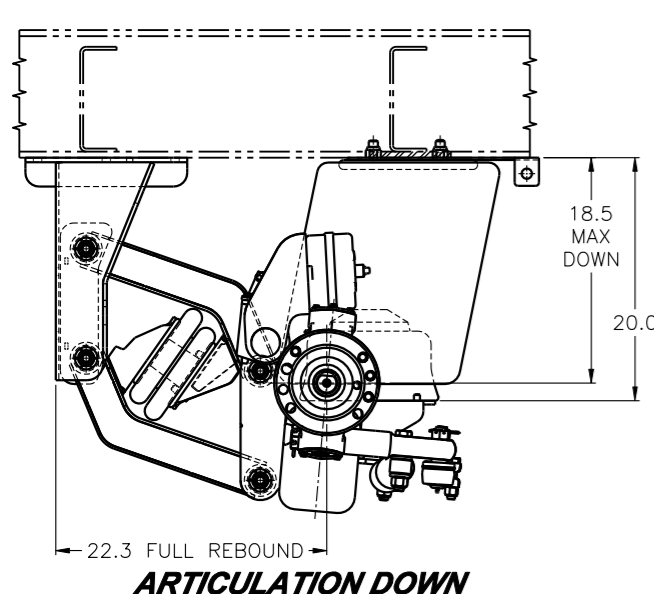


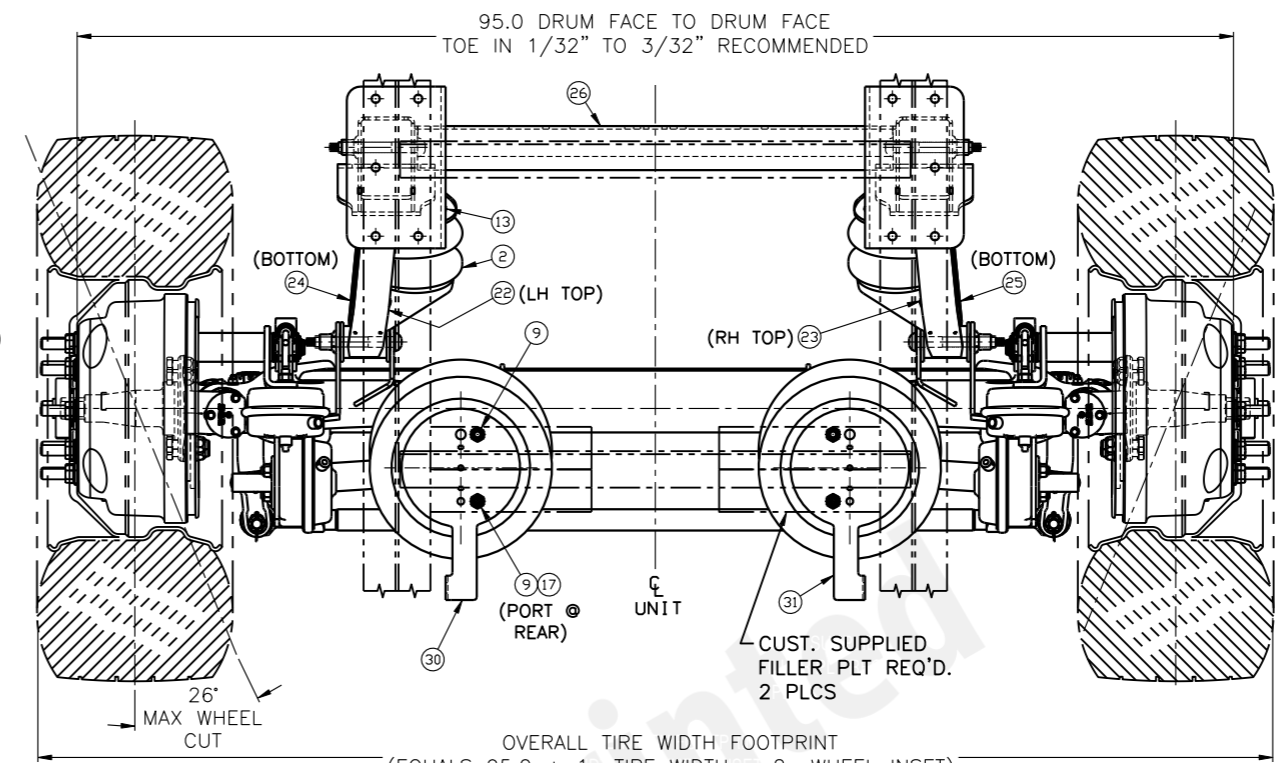
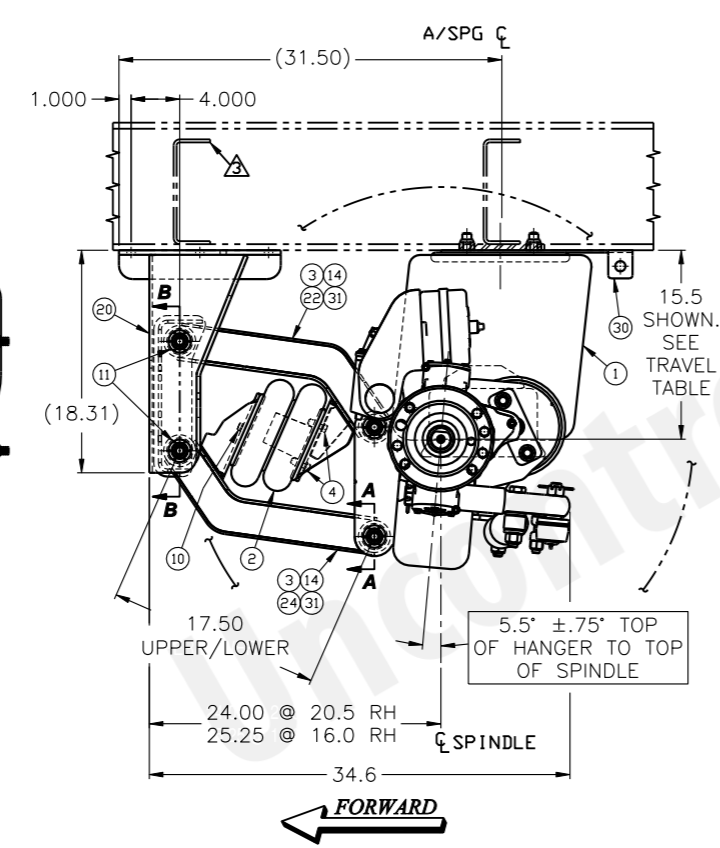
**BOLTING PATTERN DETAIL**  
(TYP OTHER SIDE)



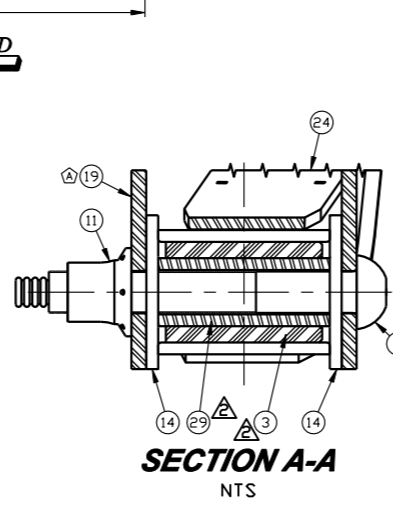
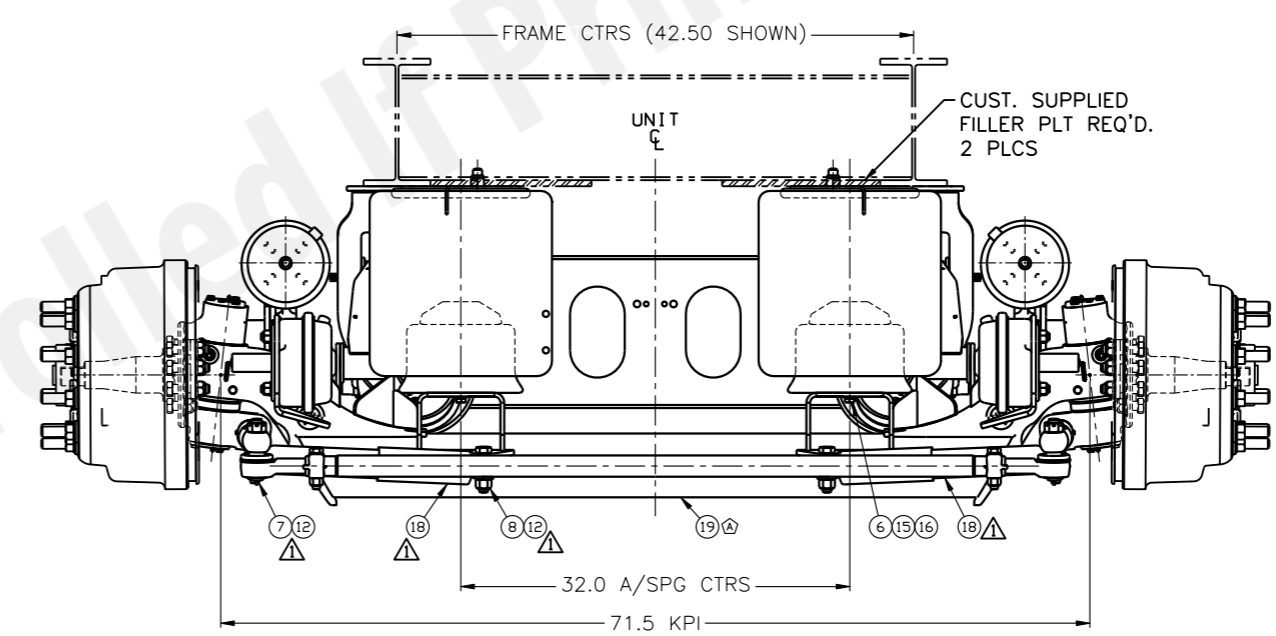
**ARTICULATION UP**



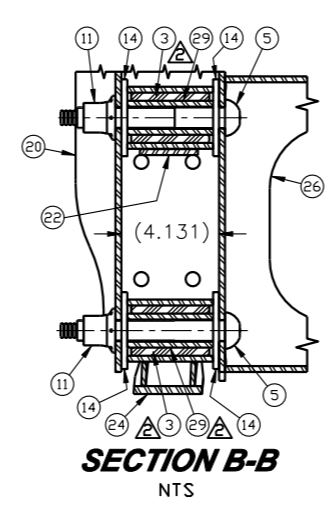
**ARTICULATION DOWN**



OVERALL TIRE WIDTH FOOTPRINT  
(EQUALS 95.0 + 1x TIRE WIDTH - 2x WHEEL INSET)



**SECTION A-A**  
NTS



**SECTION B-B**  
NTS

TRAVEL TABLE		
RISE HEIGHT	UP TRAVEL	DOWN TRAVEL
11.0	5.0	7.5
11.5	5.5	7.0
12.0	6.0	6.5
12.5	6.5	6.0
13.0	7.0	5.5
13.5	7.5	5.0
14.0	8.0	4.5
14.5	8.5	4.0
15.0	9.0	3.5
15.5	9.5	3.0

ITEM No.	PART No.	PART DESCRIPTION	PARTS REQUIRED FOR 2339128(S) (STEER LOCK VERSION)		PARTS REQUIRED FOR 2339128 (NON STEER LOCK VERSION)	
			No. REQ'D	No. REQ'D	No. REQ'D	No. REQ'D
1	1001R14296G	A/SPG 1R14-296	2	2		
2	1003586946C	A/SPG 2B9-254 / 20F-2 #6946	2	2		
3	1120043	BUSH 2.14x1.428x3.30LG 90A	8	8		
4	1130051	WHIZ-LOCK FL SCR .375-16 x .75	4	4		
5	1130060	HUCK BOLT 7/8" 4.75-5.12 GLGR8	8	8		
6	1140554B105	HMCS .50-13NC x 1" LG GR5 ZINC	4	4		
7	1143076B105	HMCS .75-10NC x 4.50" LG GR5	-	-		
8	1147698B105	HMCS .75-10NC x 3.25" LG	-	-		
9	1150011	L' NUT .75-16NF GR2 NYL INS	4	4		
10	1150062	L' NUT .50-20NF NYL INS GR2	2	2		
11	1150065	HUCK COLLAR 7/8" BOBTAIL	8	8		
12	1150709B105	L' NUT .75-10NC OVAL .75" HI	-	-		
13	1154700B102	L' NUT .75-16NF JAM NYL INS GR2	2	2		
14	1160026	SHIM WASHER .25 x 3.25 x 1.50	16	16		
15	1167053B100	WASHER .50" A-325 FLAT	4	4		
16	1167482B000	L' WASHER .50" INT TOOTHLOCK	4	4		
17	1230059	PLUG .25" MPT HEX SDCCT	2	2		
18	1310002	DAMPER SELF CTRG	-	-		
19	1640481	AX 223T 20K 5.0x71.5 WT	1	-		
20	1640481(S)	AX 223T 20K 5.0x71.5 WT w/STR LK	-	1		
21	3170228	HGR ASY LH 233-20K LMTB	1	1		
22	3170229	HGR ASY RH 233-20K LMTB	1	1		
23	5050022	T' ROD SUB-ASS' Y LH UPPER 233-20	1	1		
24	5050023	T' ROD SUB-ASS' Y RH UPPER 233-20	1	1		
25	5050024	T' ROD SUB-ASS' Y LH LOWER 233-20	1	1		
26	5050025	T' ROD SUB-ASS' Y RH LOWER 233-20	1	1		
27	5480043	CRDSS CHANNEL 233T-20K WT	1	1		
28	6040160	BUSHING KIT 233-20K TRLR	-	-		
29	6040161	BUSHING KIT 233-20K TRLR w/HDWR	-	-		
30	8004288	A/SPG MTG PLT LH 233-20K LMT	1	1		
31	8004289	A/SPG MTG PLT RH 233-20K LMT	1	1		
32	9090082	SLV 1.44" OD x .938" ID x 4.111" LG	8	8		

- NOTES:**
- △ - ITEMS 8, 9, 12 & 18 ARE PART OF THE AXLE ASY (ITEM 19) AND ARE LISTED FOR REPLACEMENT REFERENCE ONLY.
  - △ - BUSHING INSTALLATION:  
- INSERT BUSHING (ITEM 3) INTO TORQUE ROD (ITEMS 22-25).  
- APPLY ALL-PURPOSE GREASE TO BUSHING FACE AND INNER DIAMETER AND TO THE OUTER DIAMETER OF THE INNER SLEEVES (ITEM 31).  
- PRESS IN INNER SLEEVE.  
- AXLE END SLEEVES WILL NEED TO BE POSITIONED ACCORDING TO FRAME WIDTH.
  - △ - FRAME CROSSMEMBER REQ'D WITHIN 6" OF LEADING OR TRAILING EDGE OF HANGER (OPTIMAL LOCATION SHOWN).
  - △ - BUSHING KITS (ITEMS 27 & 28) ARE AVAILABLE AS SEPARATE ORDER ITEMS.
  - △ - RE-TORQUE FASTENERS AFTER 6,000 MILES AND 36,000 MILES THEREAFTER.
  - △ - PRODUCT IS DESIGNED FOR SINGLE WHEEL APPLICATION.
  - △ - NOTE ALL TIRE & WHEEL COMBINATIONS MUST BE INSET.
  - △ - TIRE AND WHEEL COMBINATION MAY DICTATE GAWR. GAWR NOT TO EXCEED 20k.

TORQUE VALUES			
ITEM	SIZE	TORQUE	
		(FT-LB)	(N·M)
6	.50-13NC	50	68
11	.50-20NC	25	34
12	.75-10NC	160	217
10/13	.75-16NF	50	68

**(2339128(S) SHOWN)**  
**CAPACITY=20,000 lbs.**

A	2448	ITEM 19 WAS 1640301/1640301(S)	6/30/21	AAS	GWH	MJK
REV	PROJ/ECR	REVISION DESCRIPTION	DATE	BY	CHK	APPD
DRAWN BY:	AAS	6/21/2021				
CHECKED:	BB	6/23/2021				
APPROVED:	MJK	6/23/2021				
PROJECT NO:	2448	SCALE: B-SIZE: NTS D-SIZE: N/A	TITLE: RSS-233LMTB W.T. KKP ABS, 20,000 lb. CAP., 5" DROP W'P-FF AXLE w/UNPAINTED A/SPG MOUNTS			
MATERIAL:	SEE BOM	WEIGHT:	-			
TOLERANCES UNLESS OTHERWISE SPECIFIED:						
DECIMAL: .X ±0.1			FRAC: ±1/16			
.XX ±0.06			ANG: X ±1°			
.XXX ±0.030						
*WELD TOLERANCES PER ISO W045-02						
SHEET 1 OF 1			PART NO:		REV:	
			2339128(S) LMTB		A	

This drawing and/or electronic media containing this drawing is the sole property of the Ridewell Corp. and is loaned with the express condition that it is not to be used in any way deleterious to the interest of the Ridewell Corp. The acceptance of this drawing and/or electronic media containing this drawing will be construed as an acceptance of the foregoing conditions. Drawings and/or electronic media containing this drawing are to be returned to the Ridewell Corp. upon request.